

HSE-3

LABORATORY HEAT SEALER

PRECISION LABORATORY HEAT SEALER FOR PRODUCTION OF REPEATABLE HIGH QUALITY HEAT SEALS AND DETERMINATION OF HEAT SEAL THRESHOLD.
PRODUCES SEALS 5 TO 25MM WIDE AND UP TO 300MM LONG.

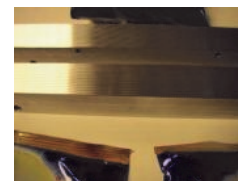


Benefits:

- Choose heat sealing bar configuration, either single (upper) or dual (upper & lower, meets ASTM F2029)
- User can easily change sealing bar for various surface areas or surface finishes
- Accurate and repeatable seals due to precision ground sealing faces and jaw guidance system
- Versatile applications for flexible materials, blister packs and pots
- Low Maintenance - 12 months between calibrations

Features:

- Precise pressure calibration of standard surface area jaw face
- Temperature, pressure and dwell time digital controllers
- Jaws constructed in aluminium and silicon with precision ground faces
- Range of jaw face surfaces including Matched Crimp and Teflon Coating
- Auto cycle feature for greater user convenience with multiple samples



Sealing Bars - Flat



Sealing Bars - Crimp



RDM Test Equipment
Unit 39 Golds Nurseries Bus. Park
Jenkins Drive, ELSENHAM
Hertfordshire, CM22 6JX, UK

Tel: +44(0)1279 817171
Fax: +44(0)1279 815743
E-mail: sales@rdmtest.com
Web: www.rdmtest.com

Specification

Seal Width	300 mm max. (Option to extend to 350mm)
Temperature Control	Range: Ambient to 300°C, Accuracy: +/- 0.5%, Operating Accuracy: +/- 2°C. Single (Upper) sealing jaw temperature control, or Dual (Upper & Lower) sealing jaw temperature control
Pressure	Range: 0 to 100psi (6.8bar, 689Kpa), via precision regulator and digital display. Accuracy +/-5%, Repeatability +/- 0.02psi . Supply via clean and dry compressed airline or bottled air/nitrogen at 90 to 100psi
Dwell Time	Range: 0.1 to 99.9 sec., Resolution 0.01 sec
Auto Cycle & Delay Time	Delay Time Range: 0.1 to 99.9 sec For automatic cycling of sealing bars used in manual production environments. Assists with correct alignment of sample. Electronic processor controlled.
Jaw Guidance System	Dovetail slide on jaws with quick release mechanism.
Sealing Jaws	Standard flat jaws 25mm x 300mm, constructed in aluminium with precision ground face. Lower sealing jaw with precision ground silicone rubber face. (See options below)
Environment:	5-50C ambient operating temperature, RH 75% max (non-condensing)
Power	240V AC 50/60 Hz (110V AC voltage available on request)

Options

- Single (Upper) sealing jaw temperature control or Dual (Upper & Lower) sealing jaw temperature control
- Sealing jaw dimension/profile as required (inc. Matched crimp 120° x 1.8mm pitch)
- Stainless Steel sealing jaws
- Teflon Coated Tape or Teflon Coated Jaws
- Blister Pack Simulator sealing jaw
- Additional Blister tray
- Footswitch
- PVC Dust Cover
- Alarm package for temperature High/Low, selectable
- Cold seal system
- Digital thermometer with s/s band probe to check jaw temperature (see image)

